

SIGNATURE COLLECTION

THE EMERALD

MH2

\$849,900



All furniture, fixtures and fittings shown above are for illustration purposes only and do not form part of a contractual obligation.

1,655
sq. ft.

3

2.5

NO
GARAGE

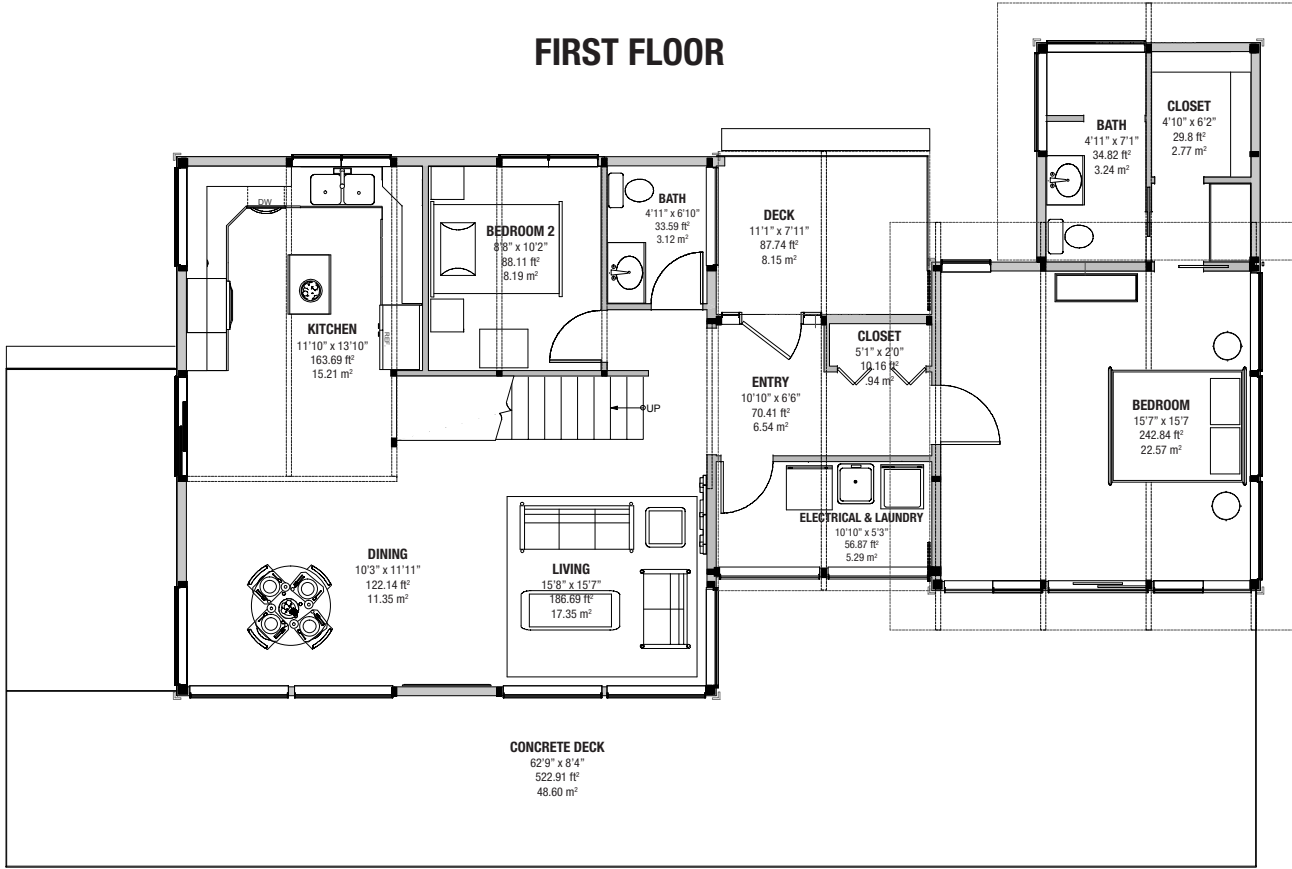
IN-FLOOR
RADIANT
HEATING

SLAB
FOUNDATION

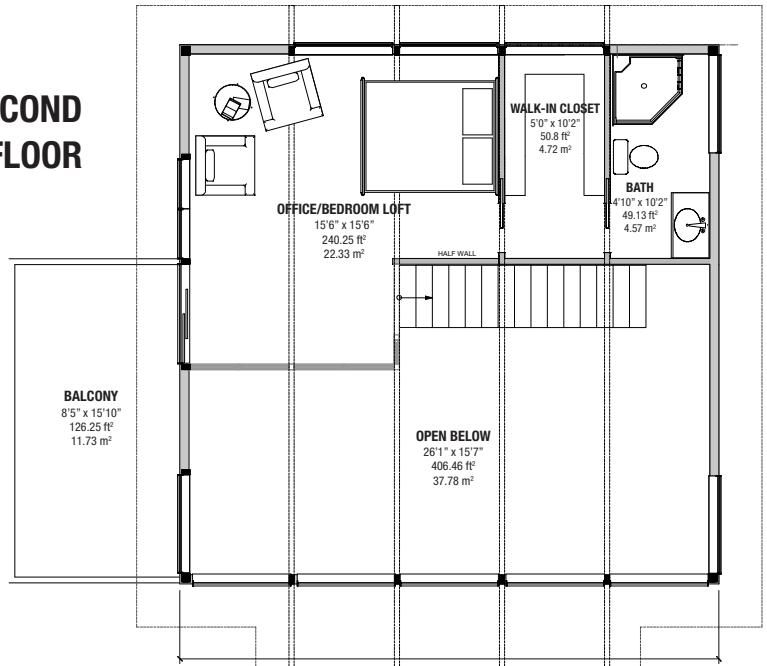
The strength and radiance of the Emerald's post and beam building system allows for flexible interiors that enable joyous gatherings in the open concept main living level as well as quiet retreats upstairs in the loft which boasts floor to ceiling windows. With decks on both levels, this home is perfect for alfresco dining as well as star gazing with loved ones on clear summer nights. This home optimizes solar orientation and natural shading, as well as use of energy efficient cedar-framed high performance windows, and pre-cut materials, which are delivered to your building site to reduce waste. Your home will be designed to impact the natural environment as minimally as possible, from start to finish.

THE EMERALD

FIRST FLOOR



SECOND FLOOR



Please note: All measurements are interior wall to interior wall and include non load-bearing walls.

Terra Firma Development Corporation reserves the right to make changes and modifications. Dimensions, specifications, layouts, designs and materials are subject to change. Elevations shown are an artist's rendering only. All plans are the exclusive property of Terra Firma Development Corporation. Any replication or reproduction in whole or part is strictly prohibited.

